

ADA REGULATIONS FOR DISPENSER MOUNTING:

The ADA Regulations limit the Maximum and Minimum requirements for Forward Reach and Side (Parallel) Reach over Obstructions and without Obstructions. The Minimum Reach is 15" off the floor, which does not come into play for soap dispensers. Therefore, Kutol only addresses the Maximum Reach in our mounting instructions. ***The limit applies to the activation point for operable parts with a 5 pound maximum activation force.***

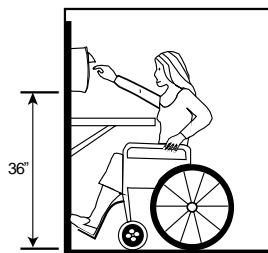
MAXIMUM FORWARD REACH:

	ADA Regulation	Kutol Nozzle	Kutol Bottom	Difference
No Obstruction	48"	48"	40"	8"
Over Obstruction	44"	44"	36"	8"

MAXIMUM SIDE (PARALLEL) REACH:

	ADA Regulation	Kutol Nozzle	Kutol Bottom	Difference
No Obstruction	54"	54"	46"	8"
Over Obstruction	46"	46"	38"	8"

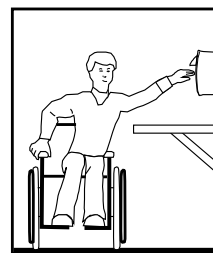
When following our mounting instructions, Kutol dispensers meet the ADA regulations. Our instructions say to mount the **bottom of the dispenser** at the stated heights, which have been adjusted 8" lower than the ADA regulations to account for the location of our "Top-dispensing" activation point.



FORWARD REACH

Over Obstruction: Mount so bottom of dispenser is no more than 36" above the floor surface.

No Obstruction: Mount so bottom of dispenser is no more than 40" above the floor surface.



SIDE REACH

Over Obstruction: Mount so bottom of dispenser is no more than 38" above the floor surface.

No Obstruction: Mount so bottom of dispenser is no more than 46" above the floor surface.