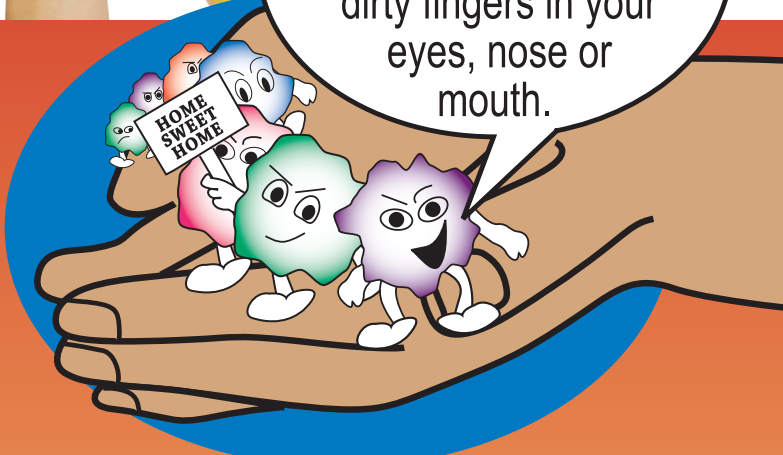
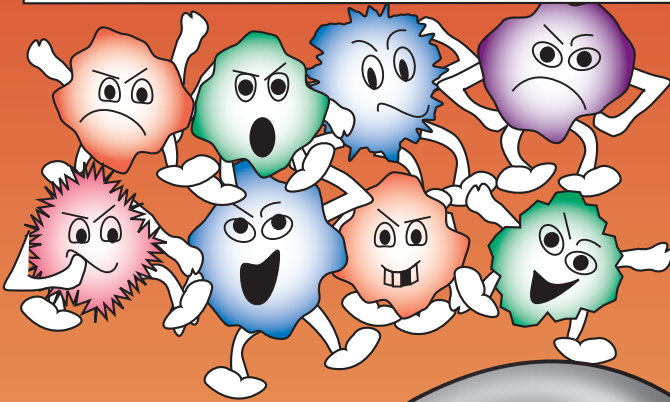


# WE GERMS LIVE ON YOUR HANDS! YOU CAN'T SEE US, BUT WE CAN MAKE YOU SICK



We enter your body through an open cut, or when you put your dirty fingers in your eyes, nose or mouth.

## THE GERM TEAM



## KEEP GERMS OUT!



Wash your hands



Bandage cuts



Sneeze or cough into your arm, not into your hands



Use your own cup, fork and spoon



## WASH YOUR HANDS:

- ★ After you use the restroom
- ★ Before and after you eat
- ★ When your hands are dirty
- ★ After handling animals
- ★ After coughing or sneezing into your hands
- ★ After blowing your nose

